



Unlimited selection

# Washroom Collection

High Pressure Laminate | Compact Grade Laminate

# for designers. Designed



Stylish and practical, the Abet range of decorative washroom panels features Compact Grade Laminate and High Pressure Laminate in the same surface decors and textures, so they can be used together to cost effectively fit the demands of your project. Abet Compact Grade Laminate and High Pressure Laminate have unique performance characteristics.

#### **Abet Compact Grade Laminate**

This is a range of 10mm and 12mm thick hygienic and water resistant flat panels with a very high level of tensile strength. They are perfect for the toughest conditions encountered in very high traffic and wet areas. Each Abet Compact Grade panel has a decorative surface on both sides that are protective coated with a removable film and have edges that can be machined to any profile.

#### **Abet High Pressure Laminate**

Abet High Pressure Laminate is 0.8mm thick and can be bonded both sides to suitable substrates such as moisture resistant MDF to create flat panels or curved shapes with a variety of thicknesses. So, aesthetic design flexibility becomes easy. Abet High Pressure Laminate is also a highly practical surface that can be used in areas which have moderately high traffic and wet conditions. Edges can either be seamlessly curved or finished with colour matched Dollken ABS 2mm thick edging.

Abet Compact Grade Laminate and High Pressure Laminate provide all the panels needed to create stunning washrooms consisting of changing, shower and toilet cubicles, wall and duct panels, wash hand units and changing room lockers.

**ABET LAMINATI**



Unlimited selection





#### Abet Wash Hand Units

Compact Grade and High Pressure Laminate can be used to manufacture wash hand units in a variety of designs, from individual recessed units to more modern troughs.

#### Abet Feature Wall Panels

Digital print using photographic or computer generated images can be applied to Compact Grade Laminate and High Pressure Laminate in conjunction with the Abet standard range of decors to create a bespoke washroom environment. A digitally printed High Pressure Laminate can also have digitally printed ABS edging to complete the unique look.

#### Abet Duct Panels

Simple to install, duct panels are a vital part of any modern washroom, allowing easy access for the maintenance of plumbing. Both Compact Grade and High Pressure Laminate can be used to create washroom duct paneling.

#### Abet Cubicles

Cubicles can be made from both Compact Grade Laminate and High Pressure Laminate depending on the environment. For ultimate privacy, with the use of Abet's largest sheet sizes, floor to ceiling cubicles can be designed and built, even in the tallest of washrooms.

#### Abet Lockers

Compact Grade Laminate lockers are ideal for both wet and dry areas. Compact Grade Laminate is easy to clean and yet is incredibly tough, so perfect for the heavy duty demands of lockers. Both 12mm and 10mm Abet Compact Grade Laminate can be specified for this purpose.



# The numbers behind Abet Laminati.

36

## Comprehensive Range of Decors

The Abet Washroom Collection offers a choice of 36 decors incorporating solid colours, abstracts and woodgrains. The solid and speckled abstract decors are colour co-ordinated to complement each other. Compact Grade Laminate and High Pressure Laminate share the same decors and texture, so can be interchanged throughout a project without compromising on quality or design continuity.

3

## Three Thicknesses of Material

Compact Grade Laminate is offered in 12mm thickness for cubicles, duct panels and wash hand units and 10mm thickness for lockers. High Pressure Laminate is 0.8mm thickness, but can be bonded to any thickness of substrate that you design and specify.

XL

## Sheet Size choice

A choice of sheet sizes means more cost effective projects: Abet extra-large (XL) sheets result in less waste, which in turn reduces costs and has less environmental impact. The largest sheet sizes allow the Abet Washroom Collection to be used to create cubicles that comply with the Equality Act and relevant building regulations to assist people with mobility issues to access public buildings.

#1

## Unbeatable Materials and Service

All Abet Washroom Collection Compact Grade and High Pressure Laminates fully comply with EN438:2005. In addition, Abet has achieved accreditations from Greenguard, IMO, BS EN 476, ISO 14001, ISO 9001 and many other quality product and service certificates.

5000

## Huge levels of Stock

Over 5000 sheets are held in stock at the centrally located warehouse of the distributor Blackheath Products, so prompt and accurate deliveries are made to UK and Ireland cubicle manufacturers, up to 5 times a week throughout the year.

60

## Years of Experience

Founded in the late 1950s in Northern Italy, Abet Laminati S.p.A. (Abet) has become one of the World's largest and most stylish producers of Compact Grade Laminate and High Pressure Laminate.



# Where Abet can be used.



## **Commercial** - Hotels | Offices | Retail

The extra-large (XL) Compact Grade Laminate and High Pressure Laminate sheets ensure that modern full height cubicles, which are ideal for the commercial market can be produced in any of Abet's colour range.



## **Leisure** - Swimming Pools | Gyms | Stadia

Abet's super tough and water resistant Compact Grade Laminate, is ideal for the specific demands of modern gyms and changing rooms.



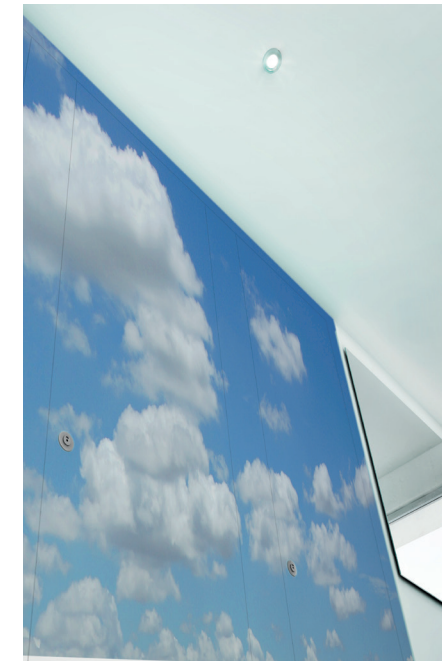
## **Health** - Hospitals | Surgeries

Washrooms in healthcare environments have to be completely hygienic and easy to maintain. Abet's Compact Grade Laminate and High Pressure Laminate is designed to do both.



## **Education** - Schools | Universities

From small nursery sized cubicles in bright primary colours to more mature spaces, Abet is ideal for the provision of flexible, safe and vandal proof washroom spaces in the education sector.



## **Digital Print**

Abet can now produce stunning bespoke photographic and CG images which are printed directly onto both Compact Grade Laminate and High Pressure Laminate using a digital printing process. There is no loss of the physical properties of either Compact Grade Laminate or High Pressure Laminate in this printing process.





**Abet and The Commercial Sector**

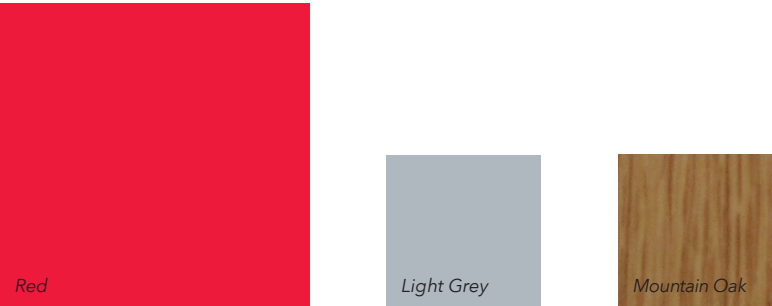
Extra large laminate sheets ensure that modern full height cubicles, ideal for the commercial market, can be produced using any décor from Abet's range.

Shown here are *Red* full height cubicles with *Light Grey* dividers which offer a stunning yet mature look. These solid colours are balanced beautifully with *Mountain Oak* ducting panels to the rear of the cubicle.

Up to 4.2m tall in one panel

**Abet Benefit: XL Laminate**

Extra - large sheets offer great versatility, but for ease of handling and transportation, Abet also offer the cubicle manufacturer a single cut service on any 4200 x 1860mm Compact Grade sheet at any point along the length. Please contact the UK and Ireland distributor Blackheath Products for this service.







## Abet & Leisure

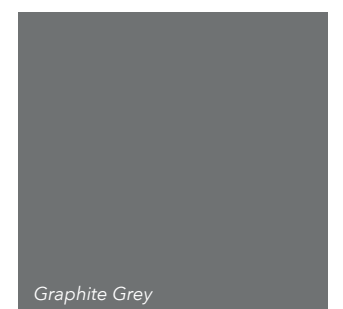
Bright colours in super tough Compact Grade Laminate, are ideal for the unique demands of gyms and changing rooms.

Here *Graphite Grey* 12mm Compact Grade Laminate with its easy clean texture is used for cubicle doors, whilst *Spring White* has been used for the dividers in the same Abet material. The lockers have been given a pop of colour with *Green Grass* in the more slim-line 10mm Compact Grade Laminate.



### Abet Benefit - Water Proof Compact Grade Laminate

Abet Laminati's Compact Grade Laminate is the perfect solution for areas in gyms and changing rooms due to its inherent waterproof qualities.







### Abet & Healthcare

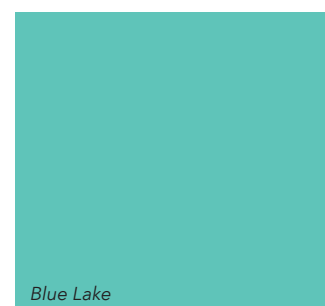
Washrooms in healthcare environments have to be completely clean and hygienic. Abet's Compact Grade Laminate and High Pressure Laminate is designed to achieve this critical standard with the appropriate cleaning regimes in place.

Here, we are showing stunning full height cubicles and a wash hand unit in *Blue Lake*.



#### ***Abet Benefit -Easy Clean***

Abet Compact Grade Laminate and High Pressure Laminate require minimal maintenance under normal use and will give years of excellent service, provided a few simple guidelines are followed. Please contact the UK and Ireland distributor: Blackheath Products, for these guidelines.



*Blue Lake*





**Abet & Education**

From small nursery sized cubicles in bright primary colours to more mature spaces, as shown here, Abet Compact Grade Laminate and High Pressure Laminate are ideal for washroom spaces in the Education sector.

*Mountain Oak* cubicle doors balance beautifully with *Spring White* dividers. A wash hand unit with *Spring White* panels and a complementary *Spring White Speckle* top complete the look.



**Abet Benefit - Tough Compact Grade Laminate**

Ideal for tough environments - Abet's Compact Grade Laminate is tough enough to withstand anything the pupils can throw at it!



# Woodgrain

## Full Sheet Images

### Abet High Pressure Laminate + Compact Grade Laminate Woodgrain décors

The complete structure of each Abet Woodgrain décor cannot be completely viewed and appreciated with the use of a small sample.

So, please refer to these scaled images of each Abet Washroom woodgrain in addition to the 1:1 actual material samples shown on the Abet range pages to follow.

Full sheet sizes are represented here in 1:10 scaled images of 3050 x 1300 sheets

### Natural Timber Colours

The beautiful natural colours of these timber species have been given free-rein with accurate reproductions by Abet.

### Wenge

Wenge is a tropical timber from Africa and the species *Millettia laurentii*. As you can see, Wenge is very dark in colour, with a distinctive wood grain design. The wood is dense and hard with great dimensional stability. These physical and decorative strengths has made Wenge a sought after timber. But sadly, this popularity has led it to being listed as “endangered” on the IUCN red list. Abet’s faithful representation of Wenge removes the need to cut down this exotic timber species.

### Walnut

Walnut is a deciduous tree from the plant genus *Juglans* and is grown successfully in many regions of the world. The Common Walnut (which Abet has used for its Walnut effect) is a tight grained hard wood that polishes to a smooth finish. When air-dried, Walnut develops a beautifully rich purplish-brown colour, as you can see in the image shown of this timber species. Because of its colour, hardness and grain design, Walnut is a prized furniture wood, so it’s no surprise that Abet have included this species for within its washroom collection.

### Mountain Oak

Oak has been used historically in prestigious buildings and in the construction of fine furniture due to its strength and attractive grain design. Oak has approximately 600 species from in the genus *Quercus*. Regrettably, many species of oaks are now under threat in the wild, due to unsustainable harvesting. The use of Abet’s Mountain Oak effect High Pressure Laminate and Compact Grade will help protect this species, whilst giving everyone the opportunity to enjoy the beauty of its grain design.

### Dyed Timber Colours

Recognizing the current design movement towards various shades of grey, Abet have dyed these distinctive timber species in keeping with that trend.

### Maple

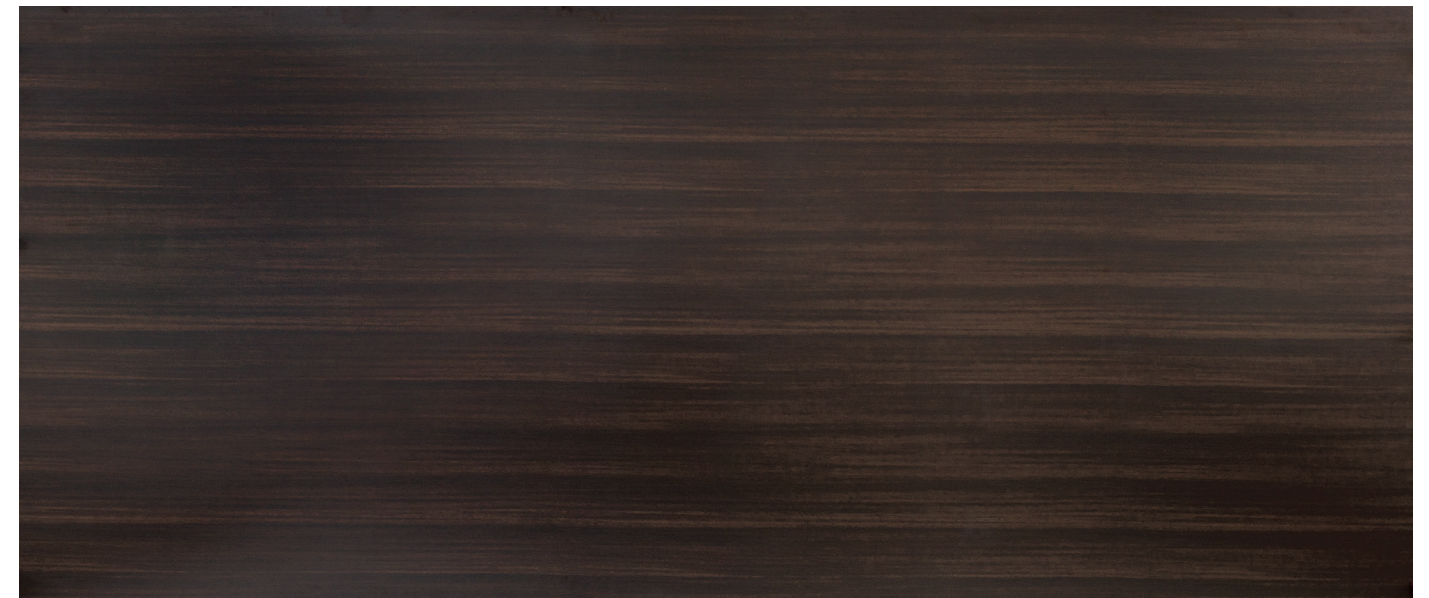
Acer is a genus of timber commonly known as Maple. Whilst Maple has had a long history of use for furniture production, the natural pale yellow colour of Maple has, for now, fallen out of fashion. So, it made a lot of sense for Abet to give the restrained beauty of Maple’s grain design a new lease of life with this light warm grey wash of colour.

### Planked Teak

Teak is a tropical hardwood species. It has a high oil content and is particularly valued for its durability and water resistance. It is frequently used for boat building and exterior furniture. Over time, Teak can weather to a silvery-grey finish, especially when exposed to sunlight. So, Abet’s dyed Grey Planked Teak effect is reflecting an eventual natural colour for this species.

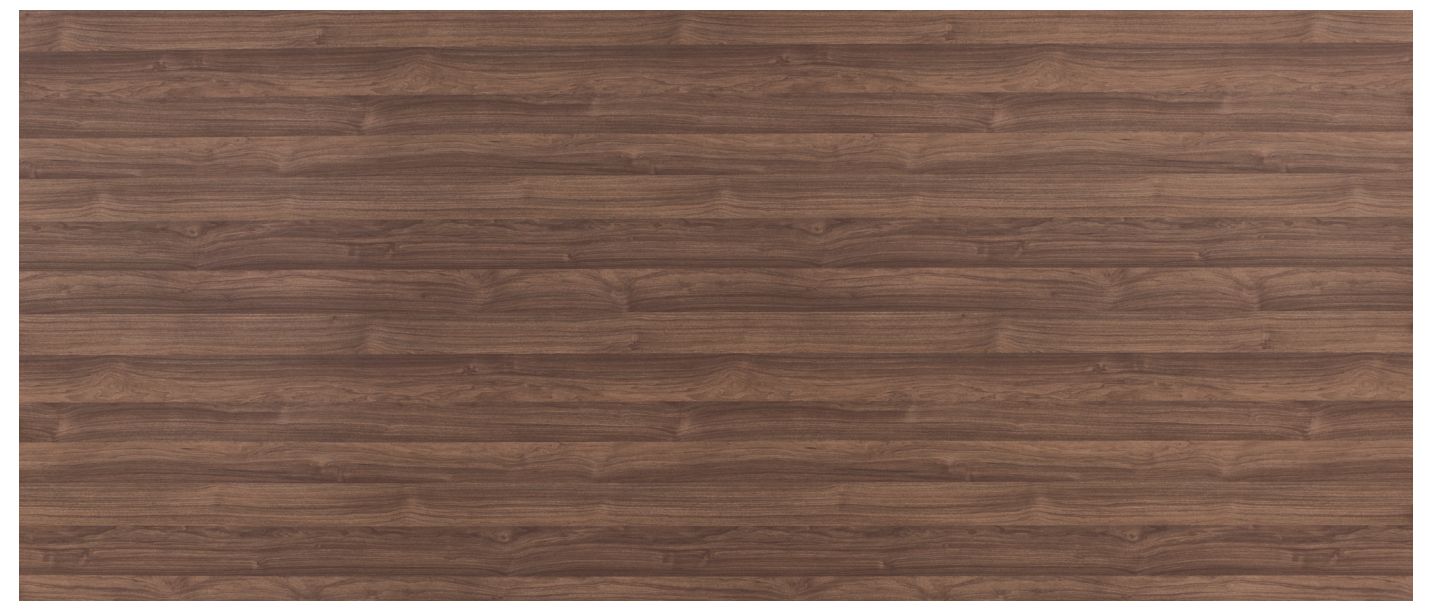
### Grey Zebrano

The wood of Zebrano is grown in central Africa. It is a heavy, hard wood used in particular as a veneer for wall paneling and marquetry. The heartwood is generally a pale golden yellow, distinct from the very pale color of the sapwood and features narrow streaks of dark brown to black. This highly decorative grain design can sometimes be visually overpowering and so Abet have applied a calming dark grey dye, whilst retaining the fundamental beauty of the grain.



Wenge

Scale 1:15 | Full Sheet 3050 x 1300mm



Walnut

Scale 1:15 | Full Sheet 3050 x 1300mm





Grey Maple

Scale 1:15 | Full Sheet 3050 x 1300mm



Grey Zebrano

Scale 1:15 | Full Sheet 3050 x 1300mm



Planked Teak

Scale 1:15 | Full Sheet 3050 x 1300mm



Mountain Oak

Scale 1:15 | Full Sheet 3050 x 1300mm



# Digital Print Laminate

The digital printing of Compact Grade Laminate and High Pressure Laminate is one of the latest developments in decorative surface technology.

In addition to the 36 decors available ex-stock, Abet can now produce bespoke images printed onto laminate using a digital printing process. Digital print offers the opportunity to reproduce photographic images, CG images, logos and way-finding graphics directly onto the laminate for outstanding and highly personalised effects.

A designer's visual concept can now be transferred digitally and printed directly onto the laminate sheet. This process can be applied to either multiple panels with co-ordinated images or single panel projects using both Compact Grade Laminate and High Pressure Laminate. Dollken digitally printed ABS edging can also be specified to complement the Abet High Pressure Laminate panels.

The Abet digital printing process is available to suit all budgets and projects and can be used to transform any washroom or changing room environment into a unique space.

Please note: Although digital printing is free from any minimum order restrictions, the process has longer lead times than standard Compact Grade Laminate, High Pressure Laminate laminate and Dollken ABS edging. Digital printing will also be subject to price surcharges. Please contact the UK and Ireland Distributor, Blackheath Products to discuss individual project and design requirements.



# Technical Specification

### Abet High Pressure Laminate + Compact Grade Laminate

Both are constructed from multiple layers of high quality kraft papers and melamine impregnated decorative surface papers reinforced by thermosetting resins under high pressure and temperature.

#### Compact Grade Laminate

- Strong and durable panels for the toughest environments.
- Exceeding the requirements of BS EN 438
- Both sides of all panels have a removable protective coating film.
- Water resistant – perfect for all washrooms and changing rooms.
- Black edges can be machined to any profile you choose.
- All Compact Grade Laminate solid colours, woodgrains and abstract decors colour match the High Pressure Laminate range of decors.
- Complies with the Equality Act and relevant building regulations to assist people with mobility issues to access public buildings.

### High Pressure Laminate

- Postforming grade panels for seamless curved shapes.
- Exceeding the requirements of BS EN 438.
- All decors have a removable protective coating film.
- A choice of substrates such as MR MDF with a selection of different thicknesses can be specified.
- Panels can be edge sealed with colour matched or digitally printed Dollken ABS.
- All High Pressure Laminate solid colour, woodgrain and abstract decors colour match the Compact Grade Laminate range of decors.
- Complies with the Equality Act and relevant building regulations to assist people with mobility issues to access public buildings.

#### Relevant NBS Clauses:

- K13 Rigid Sheet fine linings/panels, K30 Panel Partitions, K32 Panel Cubicles, L20 Doors, N10 General Fixtures & Fittings.

### Access to Public Buildings: The Equality Act

Washroom specifications are affected by the Equality Act and relevant building regulations in two particular areas:

#### Cubicle dimensions

The Abet range is available in large sheet sizes to facilitate cubicle entry and use by individuals with any mobility issues. There should be at least a 450mm gap between an in-swinging toilet cubicle door and the adjacent toilet pan.

#### Visual awareness

To assist the partially sighted there should be a visual contrast between adjacent surfaces in the washroom. This is measured by the Light Reflective Value (LRV) of colours, as shown on the Abet decor availability chart on page 9. For example, Black has an LRV of 4 and Spring White is 82. To ensure adjacent surfaces such as doors and pilasters are easily detected, there should be a visual contrast of more than 30 LRV points between the two surfaces.

### Compact Grade Laminate

- 4200 x 1860 x 12mm
- 3660 x 1610 x 12mm
- 2100 x 1860 x 12mm
- 3660 x 1610 x 10mm

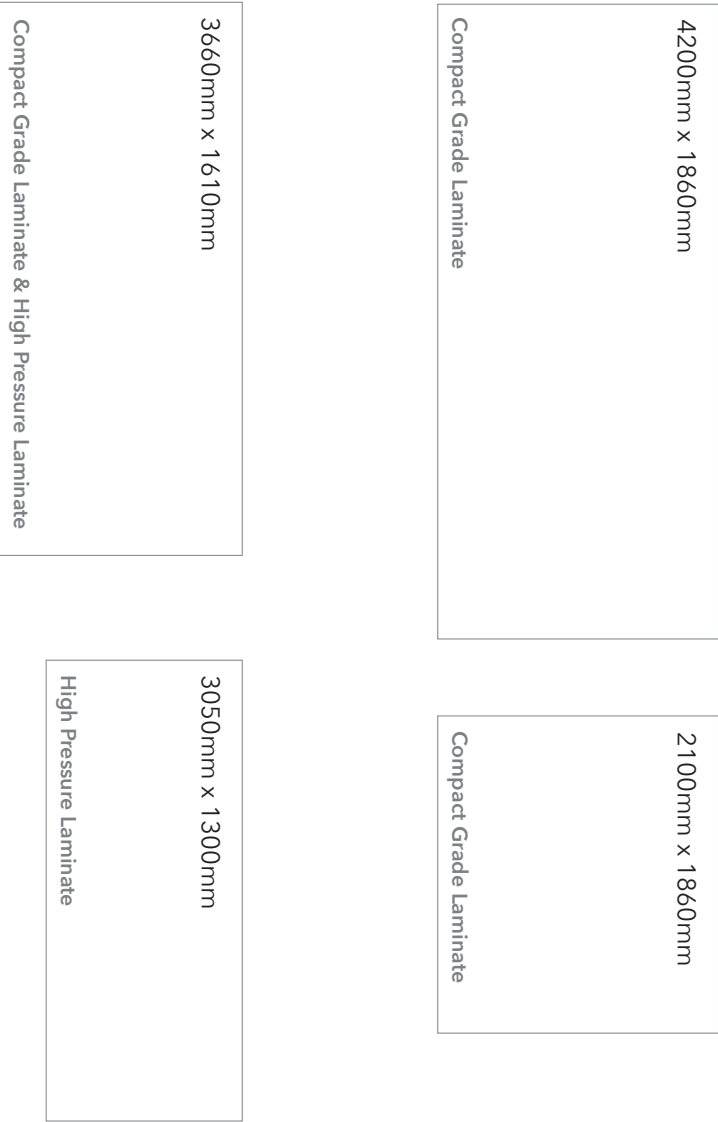
### High Pressure Laminate

- 3660 x 1610 x 0.8mm
- 3050 x 1300 x 0.8mm

A choice of sheet sizes means more cost effective projects: larger sheets result in less waste, which in turn reduces costs and has less environmental impact. Abet's largest size sheets allows the Abet Washroom Collection to be used to create large cubicles that comply with regulations set out in the Equality Act and relevant building regulations.

### Unbeatable Service

Our large size sheets offer great versatility, but for ease of handling and transportation, we also offer the cubicle manufacturer a single cut service on any 4200 x 1860 x 12mm Compact Grade Laminate sheet at any point along the length.



Scale 1:50



# Decors

# Choice & Finish

**Choice of Decors**  
Compact Grade Laminate and High Pressure Laminate share the same decors and textures and so can be interchanged throughout an application without compromising on quality or design continuity.

The Abet Washroom Collection offers a choice of 36 decors incorporating solid colours, abstracts and woodgrains. The solid and speckled abstract decors are colour co-ordinated to complement each other. From vibrant pinks and bold blues to gentle pastels, the Abet washroom collection offers a colour to suit all moods.

With disabled users in mind, the collection offers a number of contrasting colours to aid the partially sighted. The decor availability chart lists the light reflective value (LRV) of each colour.

**Decor Thickness Options**  
Compact Grade Laminate is offered in 12mm thickness for cubicles, duct panels and wash hand units and 10mm thickness for lockers. High Pressure Laminate is 0.8mm thickness, but can be bonded to any thickness of substrate that you design and specify.

**Digital Printing**  
In addition to the 36 decors available ex-stock, Abet can now produce bespoke images printed onto laminate using a digital printing process. Digital print offers the opportunity to reproduce photographic images, CG images, logos and way-finding graphics directly onto the laminate for outstanding and highly personalised effects.

Please note: Although digital printing is free from any minimum order restrictions, the process has longer lead times than standard Compact Grade Laminate, High Pressure Laminate laminates and Dollken ABS edging. Digital printing will also be subject to price surcharges. Please contact the UK and Ireland Distributor, Blackheath Products to discuss individual project and design requirements.

Abet Laminati is the largest manufacturer of decorative laminate panel products in Europe with a daily production capacity in excess of 220,000m2. Based in the Piedmont region of Italy, the company has always given prominence to the relationship between design and culture. Over the years Abet has worked with top designers such as Mario Bellini, Karim Rashid and many others. Thanks to these collaborations Abet has contributed to the development of Italian design.

Whilst every effort has been made to ensure that the printed paper representations of the decors are accurate, we are unable to guarantee an exact match due to the limitations of the printing process. The samples attached to the décor availability chart are actual Abet High Pressure Laminate samples and accurately also represent the Abet Compact Grade Laminate décor range. Abet has a policy of continuous development. We therefore reserve the right to amend product specifications without notice. All sizes shown are nominal. E&OE

## Decor Availability

Ref	Name	Finish	12mm	12mm	12mm	10mm	0.8mm	0.8mm	Dollken*	LRV	NCS
			Compact Grade Laminate	Compact Grade Laminate	Compact Grade Laminate	Compact Grade Laminate	High Pressure	High Pressure			
			4200 x 1860mm	3660 x 1610mm	2100 x 1860mm	3660 x 1610mm	3660 x 1610mm	3050 x 1300mm			
<b>Solid Colours</b>											
405	Glacier White	Six	•	•	•		•	•	•	74	0500-N
406	Spring White	Six	•	•	•		•	•	•	82	0602-G83Y
409	Cream	Six	•	•	•		•	•	•	66	1202-Y46R
410	Ice White	Six	•	•	•	•	•	•	•	79	0702-G06Y
421	Black	Six	•	•	•		•	•	•	4	8402-R85B
423	Purple Madras	Six	•	•	•		•	•	•	12	3252-R61B
425	Lilac	Six	•	•	•	•	•	•	•	48	1431-R52B
427	Fuschia	Six	•	•	•	•	•	•	•	18	1959-R24B
431	Red	Six	•	•	•	•	•	•	•	15	2364-Y95R
441	Green Citron	Six	•	•	•	•	•	•	•	61	0933-G56Y
460	Green Grass	Six	•	•	•	•	•	•	•	41	1359-G34
475	Coastal Grey	Six	•	•	•		•	•	•	45	2602-B01G
478	Light Grey	Six	•	•	•	•	•	•	•	50	2101-Y05R
486	Blue Lake	Six	•	•	•	•	•	•	•	43	1929-B59G
487	Blue Dust	Six	•	•	•	•	•	•	•	65	0914-R96B
499	California Blue	Six	•	•	•	•	•	•	•	25	1754-R98B
810	Mini White	Six	•	•	•		•	•	•	75	0704-Y22R
845	French Green	Six	•	•	•		•	•	•	17	3743-B94G
857	Heavenly Blue	Six	•	•	•		•	•	•	61	0725-B08G
859	Blue Pottery	Six	•	•	•	•	•	•	•	8	4544-R84B
860	Yellow Piper	Six	•	•	•	•	•	•	•	46	1171-Y14R
870	Grey Cloud	Six	•	•	•	•	•	•	•	26	4201-R85B
871	Dark Grey	Six	•	•	•		•	•	•	22	5301-R95B
879	Graphite Grey	Six	•	•	•	•	•	•	•	9	7302-R67B
893	Umber Brown	Six	•	•	•	•	•	•	•	23	5106-Y68R
1819	Mountain Grey	Six	•	•	•	•	•	•	•	53	2201-B79G
1860	Pacific Blue	Six	•	•	•	•	•	•	•	52	0030-R90B
1881	Orchid	Six	•	•	•	•	•	•	•	24	2020-R90B
<b>Woodgrains</b>											
312	Wenge	Six	•	•		•	•	•	•	8	n/a
616	Walnut	Six	•	•	•	•	•	•	•	16	n/a
619	Grey Maple	Six	•	•		•	•	•	•	53	n/a
631	Planked Teak	Six	•	•		•	•	•	•	25	n/a
1388	Grey Zebrano	Six	•	•		•	•	•	•	12	n/a
1661	Mountain Oak	Six	•	•	•	•	•	•	•	33	n/a
<b>Patterns</b>											
236	Spring White Speckle	Six	•	•	•	•	•	•	•	60	n/a
9947	Light Grey Spekle	Six	•	•		•	•	•	•	43	n/a

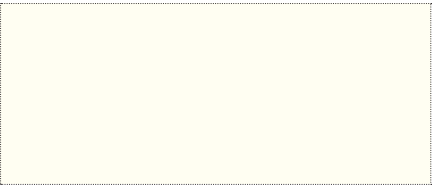
\* *Dollken*  
Dollken edging is available for each Abet Laminati decor.

All decors are protective coated (both sides on Compact Grade Laminate panels).

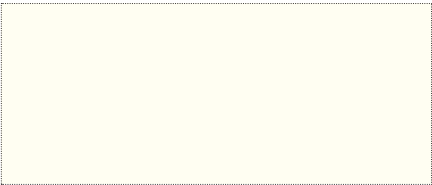


Unlimited selection

# Abet Range



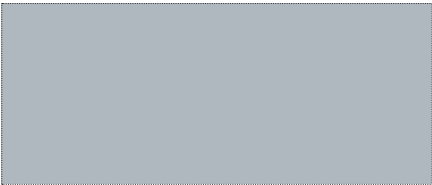
405 | Glacier White



810 | Mini White



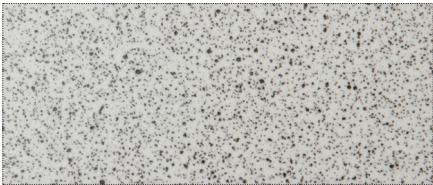
410 | Ice White



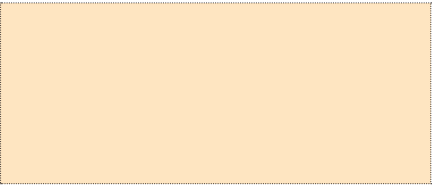
475 | Coastal Grey



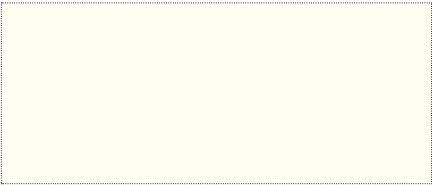
478 | Light Grey



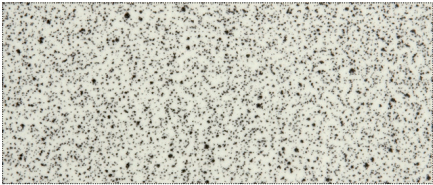
9947 | Light Grey Speckle



409 | Cream



406 | Spring White



236 | Spring White Speckle



870 | Grey Cloud



871 | Dark Grey



879 | Graphite Grey



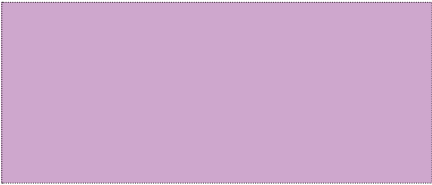
441 | Green Citron



460 | Green Grass



845 | French Green



425 | Lilac



427 | Fuschia



423 | Purple Madras



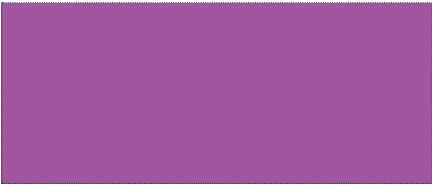
486 | Blue Lake



857 | Heavenly Blue



499 | California Blue



1881 | Orchid



431 | Red



421 | Black



487 | Blue Dust



1860 | Pacific Blue



859 | Blue Pottery



312 | Wenge



616 | Walnut



619 | Grey Maple



860 | Yellow Piper



893 | Umber Brown



1819 | Mountain Grey



631 | Planked Teak



1388 | Grey Zebrano



1661 | Mountain Oak

## **Abet and the Environment**

Abet research concentrates on minimising the environmental impact of its products. No Abet Compact Grade Laminate or High Pressure Laminate contains asbestos, lead or other heavy metals and décor papers are manufactured using clean pigments. All paper used in the production of High Pressure Grade Laminate and Compact Grade Laminate is obtained exclusively from renewable sources. The Abet policy is to continually assess the environmental impact of its products and work towards reducing any environmentally negative aspect.

Abet holds the coveted ISO 14001 certification - an internationally recognised certificate for evaluating how well an organisation manages its environmental responsibilities.

The UK and Ireland Distribution centre for the products shown in this brochure:

Blackheath Products Ltd  
Units 1-4 Fairfield Park  
Halesowen  
West Midlands  
United Kingdom  
B62 9JL

Telephone: 0121 561 3939  
Fax: 0800 634 0114  
email: [sales@abet.uk.com](mailto:sales@abet.uk.com)  
[www.abet.uk.com](http://www.abet.uk.com)

